

### MODELS SA-4, SA-10 and SA-15 SOURCE HOLDERS



**Description:** Ronan insertion type source holders are inserted into the well of thick-walled or large diameter vessels. This enables a lower size isotope to be used than would otherwise be required for externally mounted source holders.

**Construction:** Continuous Welded Carbon Steel Housing With Lead, Or Tungsten Shielding Surrounding A Doubly Encapsulated, Heliarc-Welded Stainless Steel Source Capsule.

**Handle:** Insertion Rod With "T" Handle. Length of Rod May Be Varied By Adding Detachable Sections. Mechanical Rotary Shutter (Air Shutter Optional) Lockable in the OFF Position Only.

**Weight:** SA-4: Appx. 200lbs (91kg) SA-10: Appx. 350 lbs (159kg) SA-15: Appx. 75 lbs (34kg)

**Paint:** Protective Coating, Epoxy Based (Grey is standard)

**Temperature Limit:** 300°F. (148° C)

**Collimation:** Beam Pattern up to 37 Degrees. (Dependant Upon Application)

**Maximum Source Size:** SA-4: 2 Curies (74 GBq) Cs-137, 20 mCi (0.74GBq) Co-60

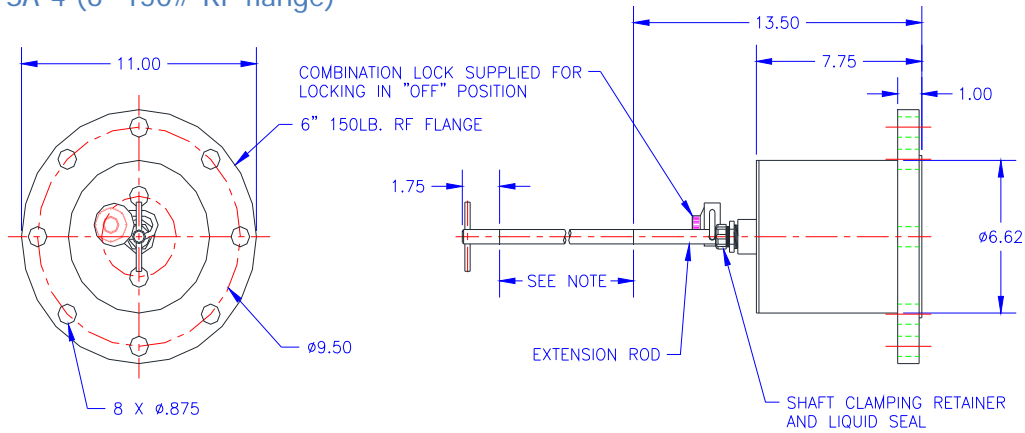
SA-10: 20 Curies (740 GBq) Cs-137, 100 mCi (3.7 GBq) Co-60

SA-15: 300 mCi (11 GBq), Cs-137, 5 mCi (0.18 GBq) Co-60.

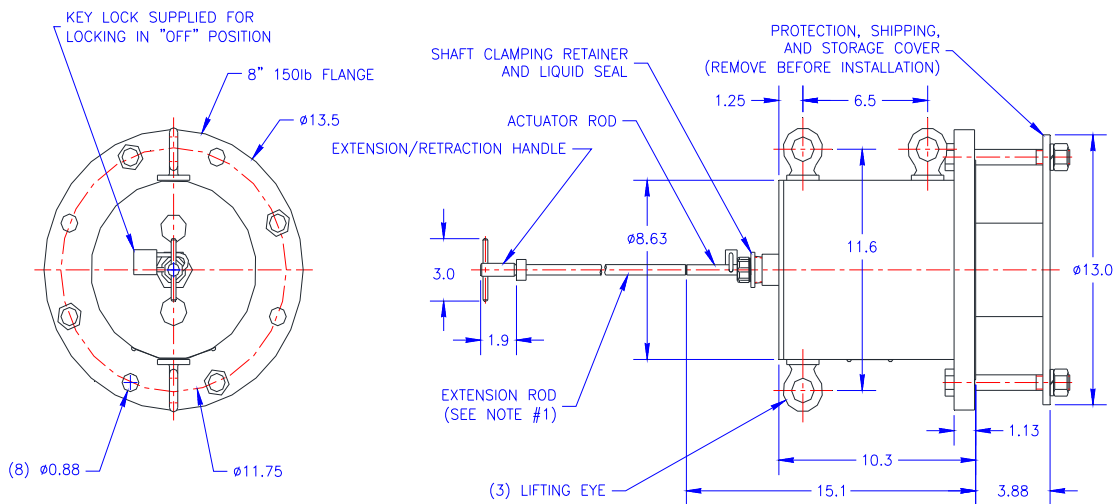
**Radiation Fields:** Meets all International Standards for Surface Radiation Limits.

# Dimensional Information

## SA-4 (6" 150# RF flange)



## SA-10 (8" 150# RF flange)



## SA-15 (4" 150# RF flange)

